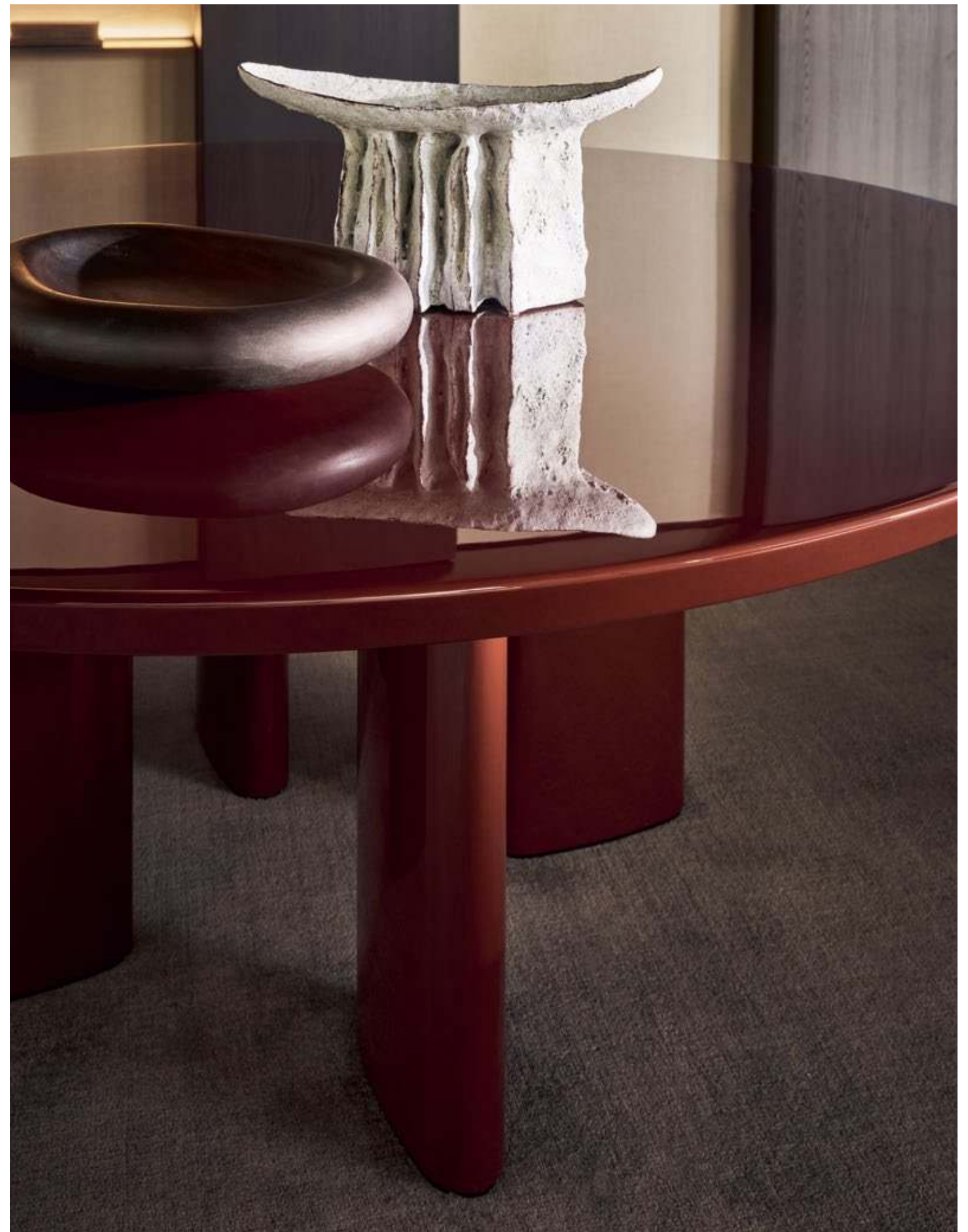




Plankfist

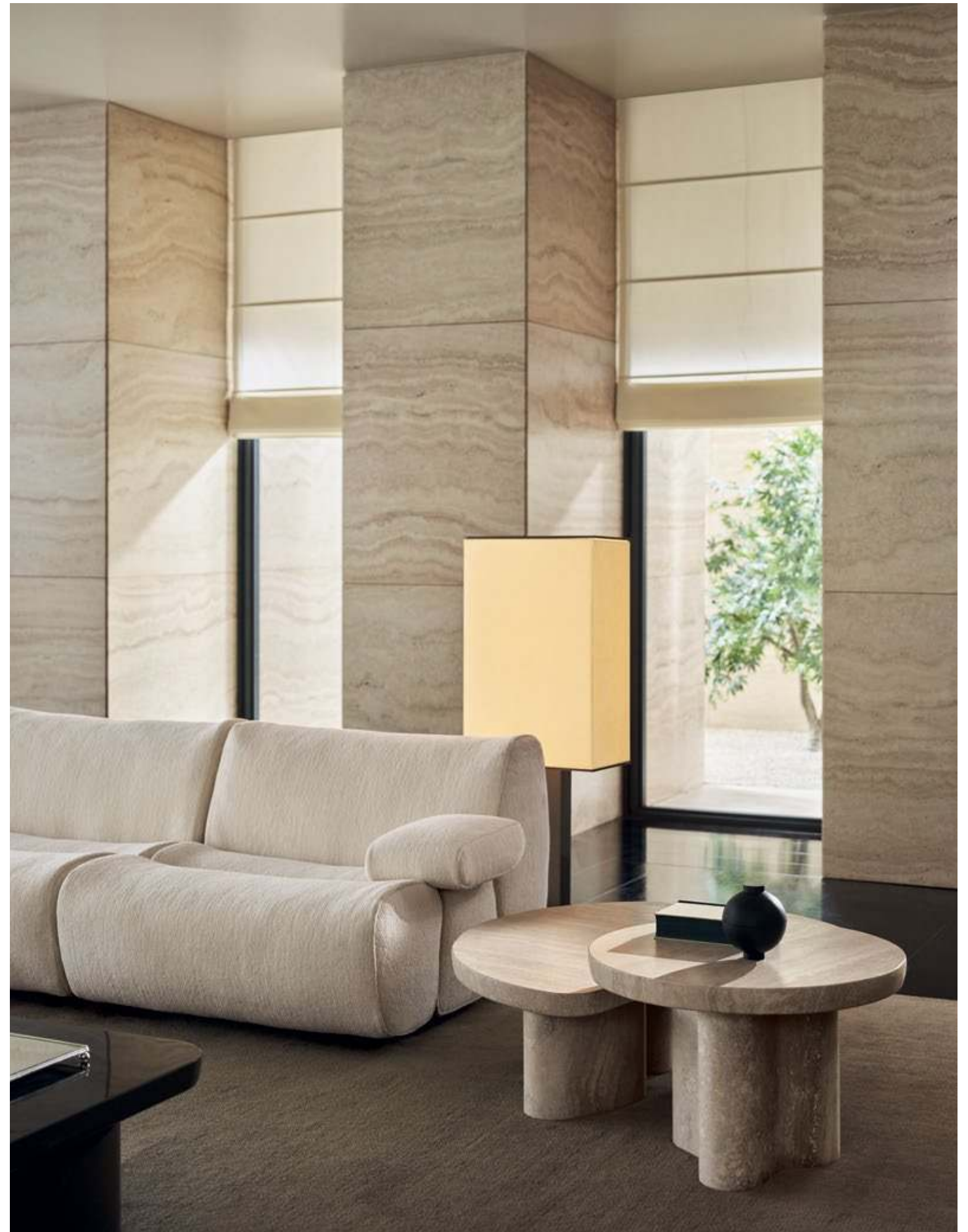


Plankfist offers a compendium of its taste and style. In this visual narrative, where architecture and design intersect, the brand's time- less elegance and extraordinary know-how emerge from a carefully balanced mix of new creations and iconic pieces. Refined shapes, soft tones, and curated materials reveal Plankfist's sense of style, setting the stage for a world where nothing is left to chance, quality is uncompromising, and every detail reflects a lifestyle.

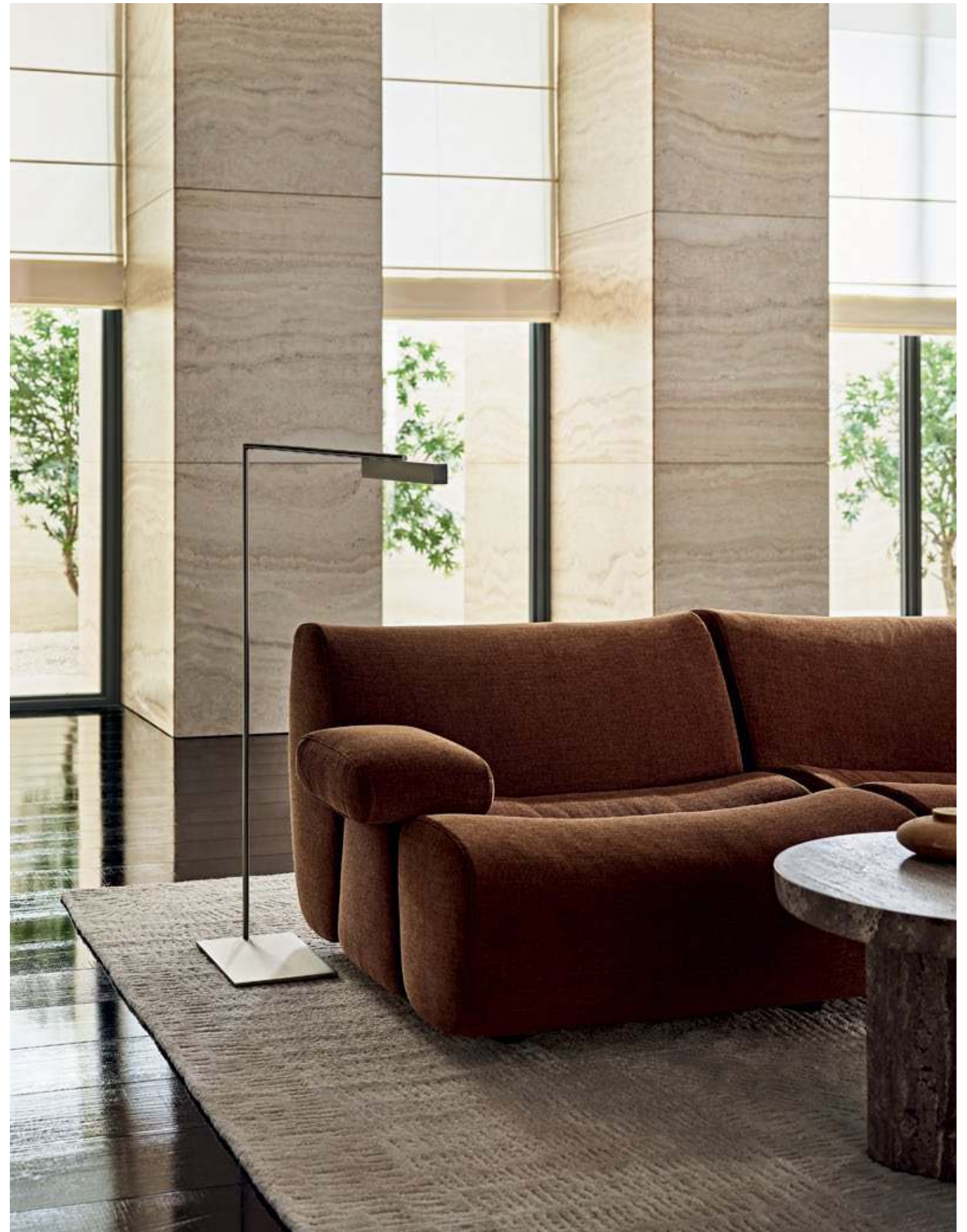




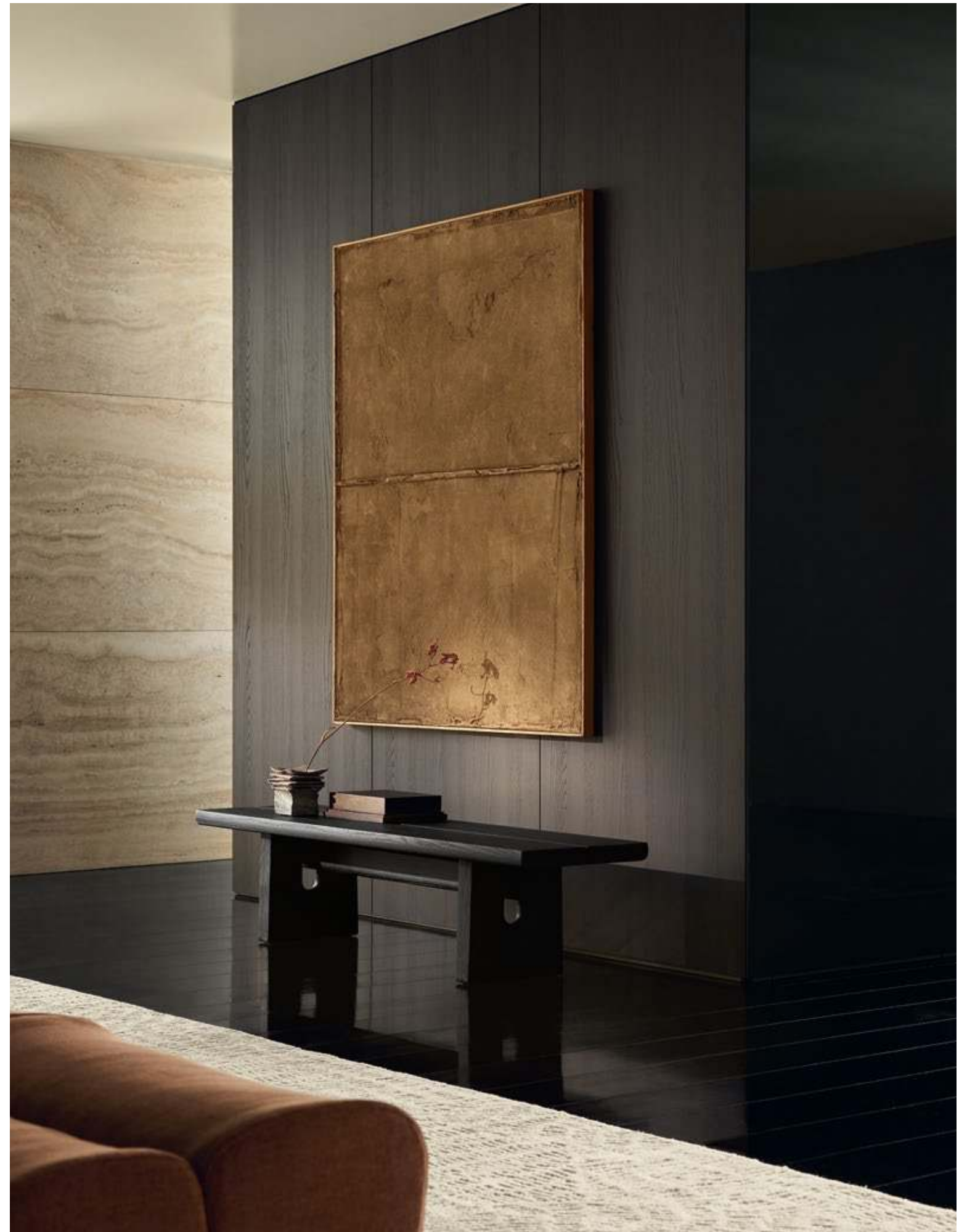


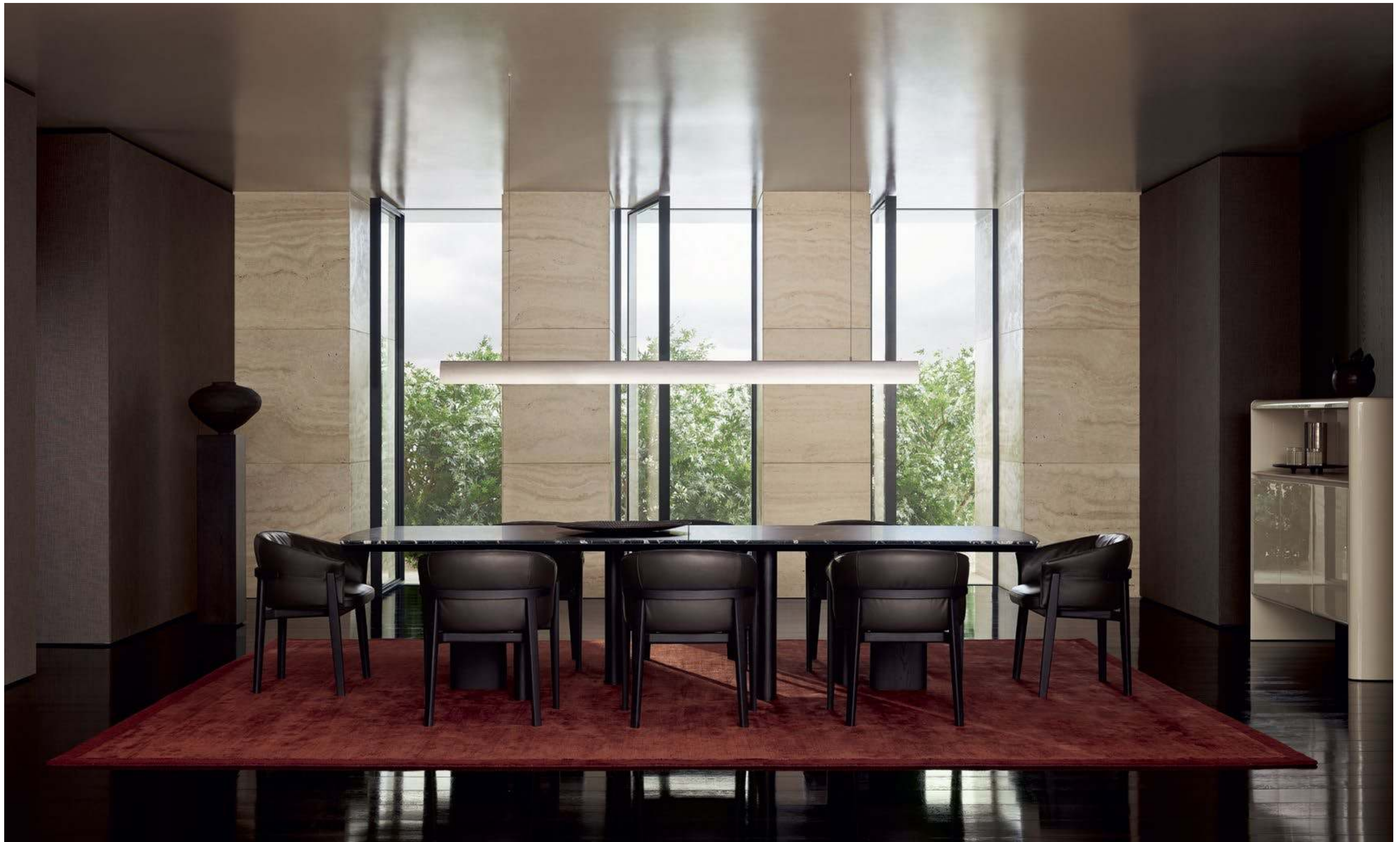




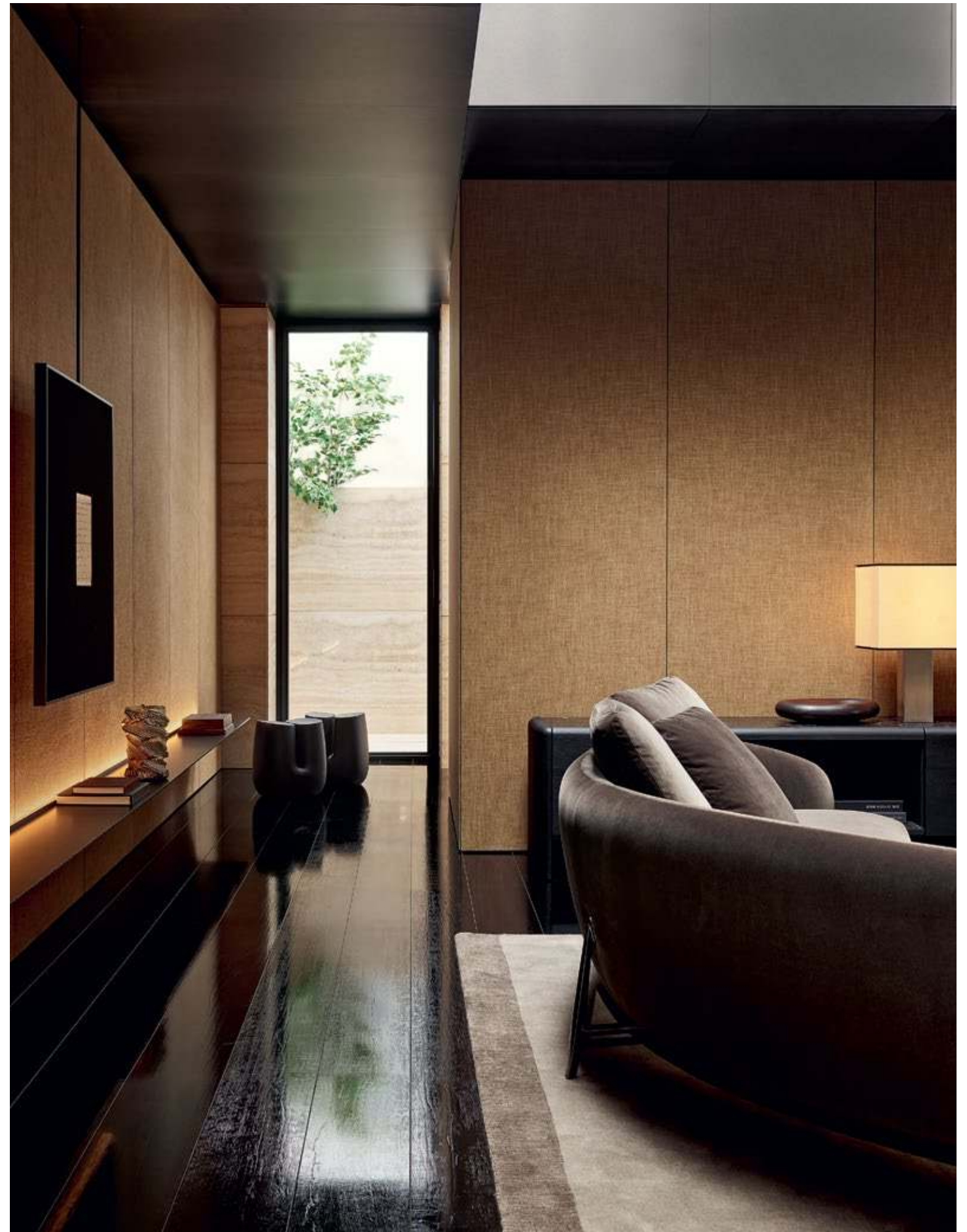




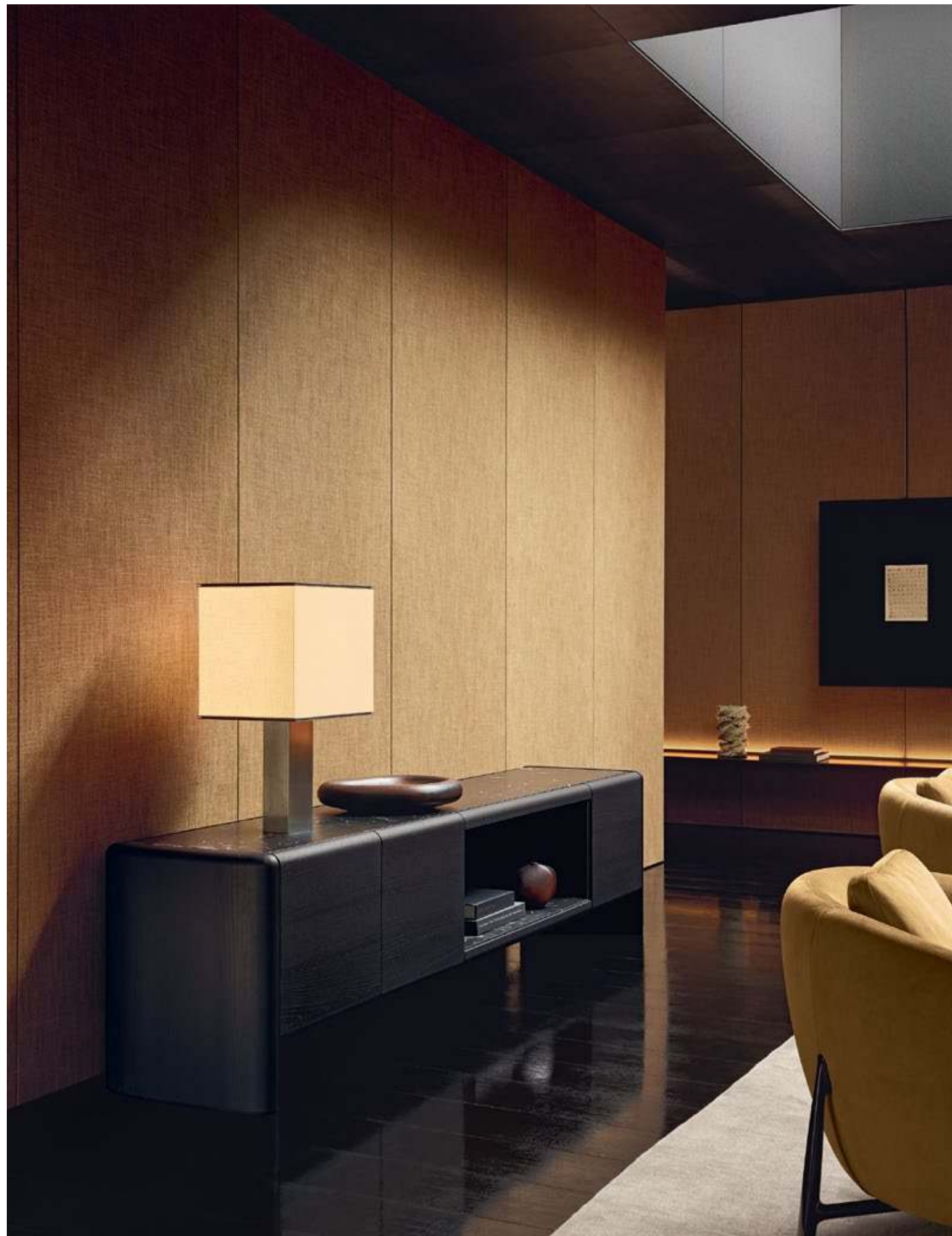






















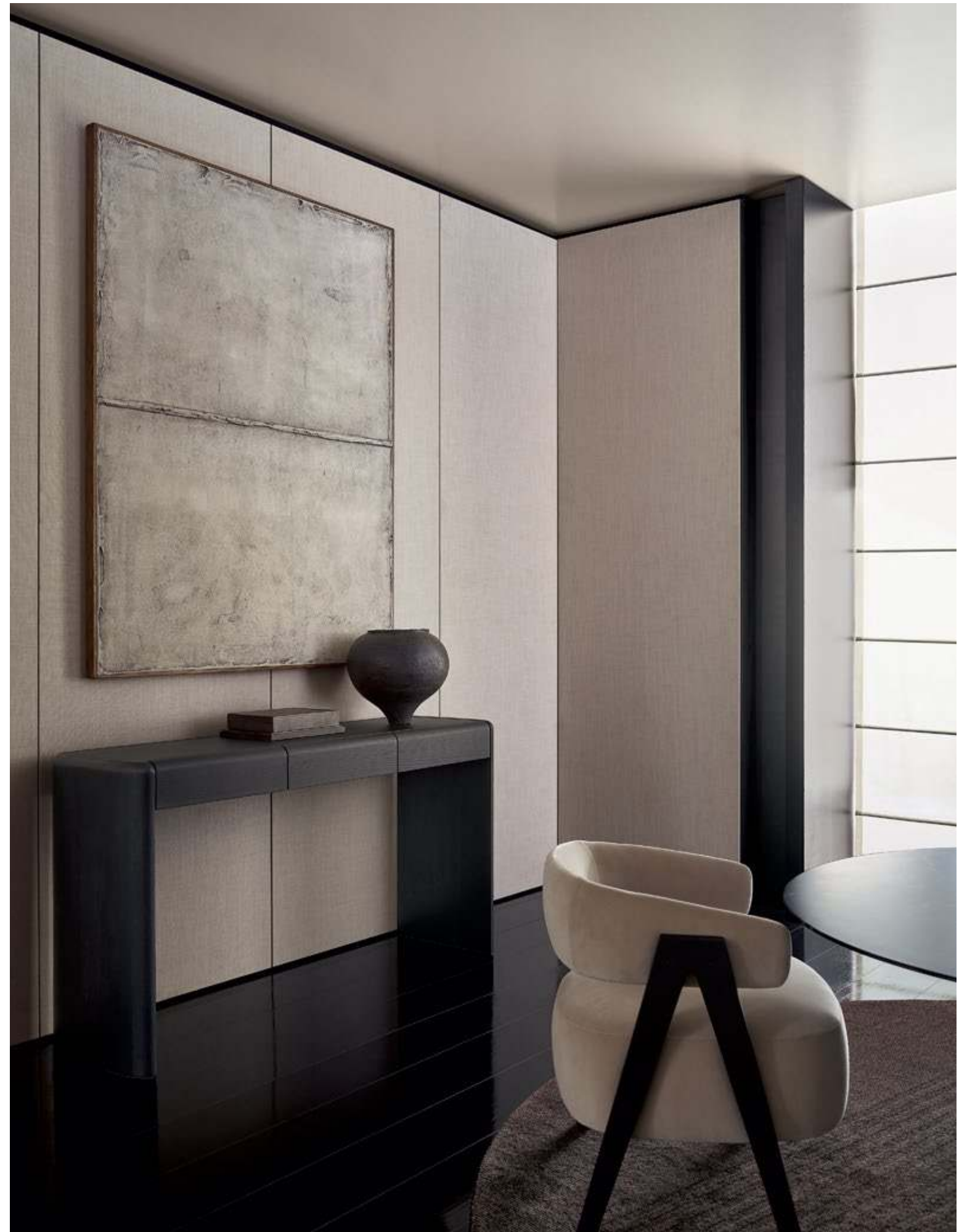


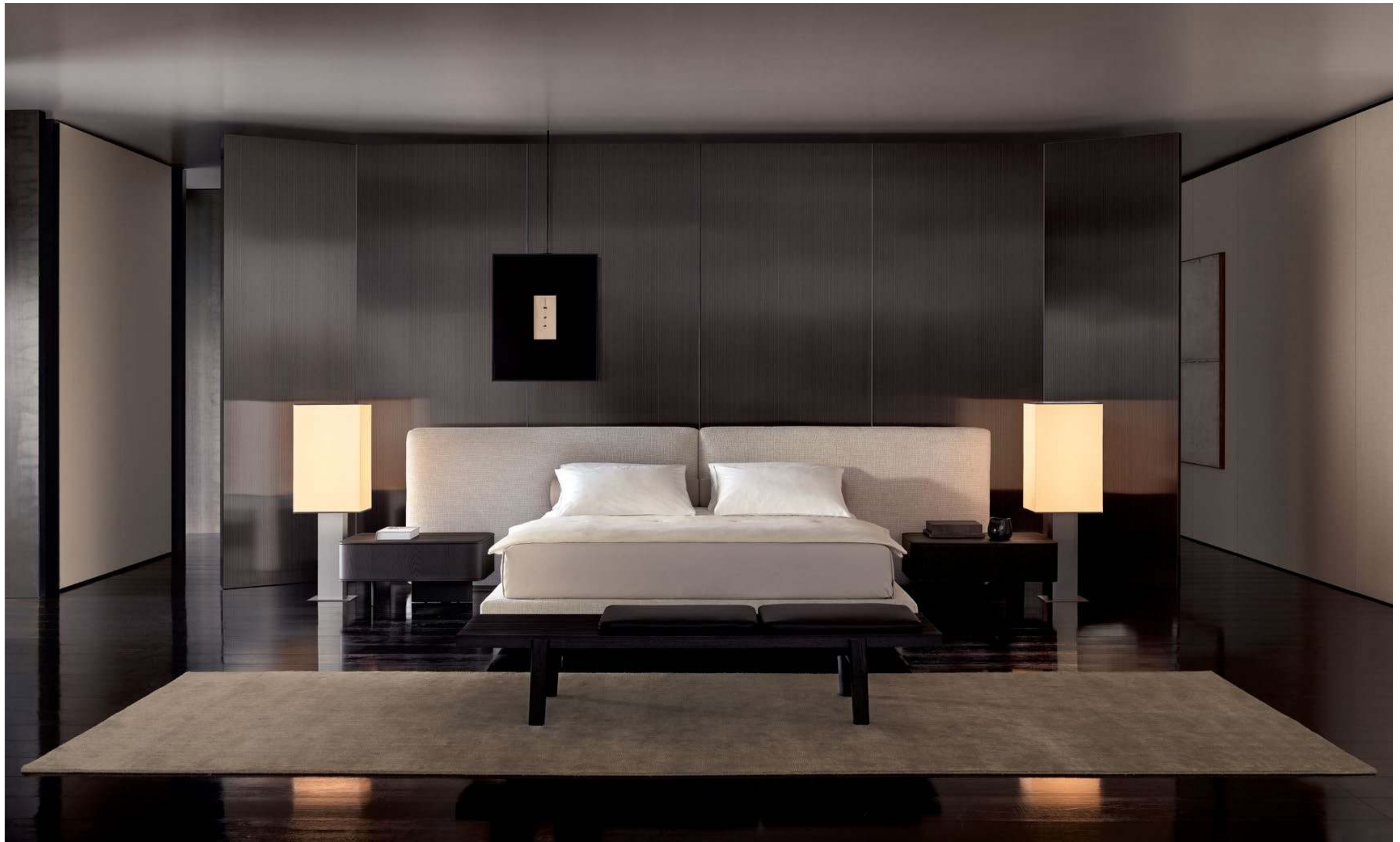










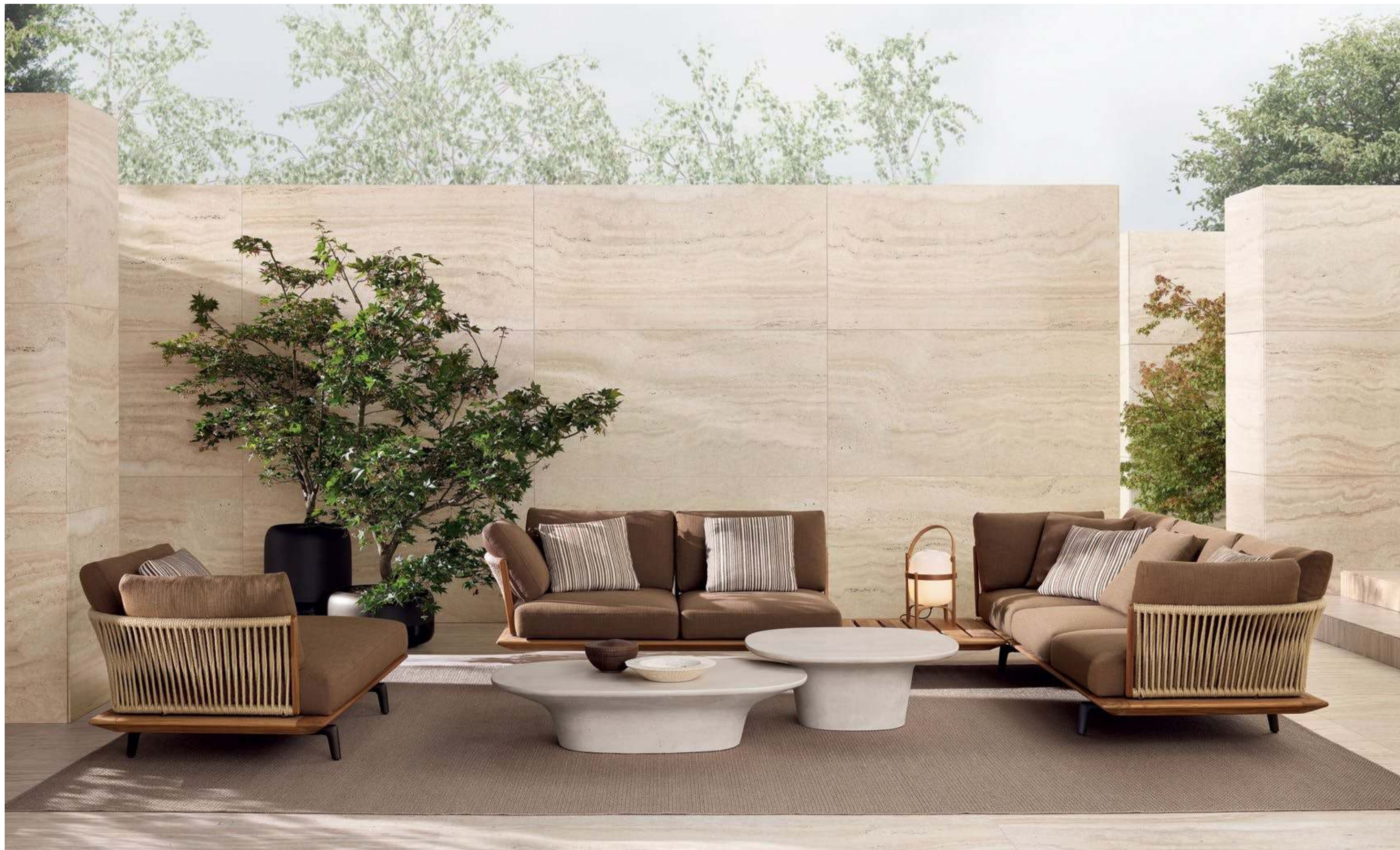














CREDITS



pp. 3, 4-5 Surface wall panelling, design R&D Plankfist, fabric Mesh ecru and black elm with mat ardesia profiles. Code backlit shelves, design R&D Plankfist, metallic lacquer bronzo. Adrien table, design Jean-Marie Massaud, glossy lacquer sella. New York pouf, design Jean-Marie Massaud, removable velvet Persia 2002 bruciato, glossy brown nickel feet. Ortho totem, design R&D Plankfist, black elm. Carpet Plain, design R&D Plankfist, tortora colour.

pp. 6, 7 Ernest sofas, design Jean-Marie Massaud, removable fabric Shedir 02 burro. Loai armchairs, design Stefano Belingardi Clusoni, removable velvet Persia 2002 bruciato, structure in black elm. Ernest coffee tables, design Jean-Marie Massaud, glossy lacquer moka. Carpet Shindo, design R&D Plankfist, natural colour.

pp. 9, 10-11 Ernest sofas, design Jean-Marie Massaud, removable fabric Shedir 02 burro. Loai armchairs, design Stefano Belingardi Clusoni, removable velvet Persia 2002 bruciato, structure in black elm. Ernest coffee tables, design Jean-Marie Massaud, glossy lacquer moka and mat travertino classico marble. Wall System composition with integrated Pivot Plus doors. Wall System, design R&D Plankfist, structure and shelves in black elm, backs in black elm print, central compartment with Stage backs in fabric Mesh ecru and Block element with flap doors at the sides and two drawers in black elm, top in metallic lacquer bronzo, integrated led light. Pivot Plus doors, design Studio Kairos, portal in black elm and mat ardesia jamb, doors in black elm with mat ardesia Plus handle and frame. Surface wall panelling, design R&D Plankfist, black elm and fabric Mesh ecru, mat ardesia profiles. Nara bench, design Jean-Marie Massaud, solid wood stained black elm. Helga lamp, design studioutte, satin-finish stainless steel and lampshade in white linen, dimmable led light. Carpet Shindo, design R&D Plankfist, natural colour.

pp. 13, 14-15, 16, 17 Ernest sofa, design Jean-Marie Massaud, removable fabric Yukon 27 tabacco. Ernest coffee tables, design Jean-Marie Massaud, black elm and mat travertino titanium marble. Nara bench, design Jean-Marie Massaud, solid wood stained black elm. Surface wall panelling, design R&D Plankfist, fabric Mesh moka, black elm and glossy lacquer tundra, mat ardesia profiles. Wall mounted Code composition, design R&D Plankfist, open storage units in mat lacquer bronzo with backs in fabric Mesh moka and integrated led light. Storage units with Tape slatted doors in black elm and transparent glass, mat ardesia frame and handle, inner structure in black elm with backs in fabric Mesh moka and integrated led light. TV portal in black elm with sides in metallic lacquer bronzo. Backlit top and sides in metallic lacquer bronzo. Helga lamp, design studioutte, satin-finish stainless steel and lampshade in white linen, dimmable led light. Arthur lamp, design studioutte, in satin-finish stainless steel and dimmable led light. Carpet Trace, design R&D Plankfist, white colour.

pp. 18-19, 20 Adrien table, design Jean-Marie Massaud, black elm structure, top in mat nero marquina marble, polyester finish. Leopold chairs, design Jean-Marie Massaud, structure in black elm and removable cover in leather Soft 13 moka. Surface wall panelling, design R&D Plankfist, fabric Mesh moka and black elm, mat ardesia profiles. Duke sideboard, design Jean-Marie Massaud, glossy lacquer canapa and inner top of the open compartment in mat zecevo marble. Ortho totem, design R&D Plankfist, black elm. Carpet Frame, design R&D Plankfist, ruggine colour.

pp. 23, 24-25, 26, 27 Orbis sofas, design Emmanuel Gallina, removable velvet Persia 2002 bruciato, dark sheer glossy metal feet. Orbis armchairs, design Emmanuel Gallina, removable leather Suede 05 commello, dark sheer glossy metal feet. Strata coffee tables, design Emmanuel Gallina, top in fused glass bronzo, legs in black elm. Duke sideboards, design Jean-Marie Massaud, black elm with top and lower shelf of the open compartment in mat nero marquina marble, polyester finish. Surface wall panelling, design R&D Plankfist, fabric Mesh bronzo, profiles in mat ardesia. Code backlit shelves, design R&D Plankfist, metallic lacquer bronzo. Helga lamp, design studioutte, satin-finish stainless steel and lampshade in white linen, dimmable led light. Arthur lamp, design studioutte, in satin-finish stainless steel and dimmable led light. Carpet Plain, design R&D Plankfist, tortora colour. Only page 23, Ube stools, design Jean-Marie Massaud, solid wood stained black elm.

pp. 28-29 Wall System compositions, design R&D Plankfist, structure in black elm and backs in fabric Mesh moka, integrated led light. On one side, composition with Ego Day doors in transparent reflective glass with moka mat lacquered frame and handle. Central compartment with Stage backs in fabric Mesh moka. Nara bench, design Jean-Marie Massaud, glossy lacquer tundra. On the other side, composition with integrated Pivot Side doors. Wall System with shelves in black elm and Status chests of drawers in black elm with top in mat zecevo marble. Pivot Side doors, design Studio Kairos, portal in metallic lacquer basalto and mat basalto jamb, doors in Inalco MVi rain ecru with mat basalto frame and Side handle. Surface wall panelling, design R&D Plankfist, black elm with mat basalto profiles. Leopold armchairs, design Jean-Marie Massaud, structure in solid wood stained black elm, removable cover in leather Suede 02 corda. Adrien coffee tables, design Jean-Marie Massaud, black elm and glossy lacquer moka. Carpet Plain, design R&D Plankfist, tortora colour.

pp. 30, 31 Wall System composition, design R&D Plankfist, structure and frame side in black elm, backs in fabric Mesh peltro, Ego Lite Screen doors in fume glass and black elm, handle in mat moka, shelves in fume glass, integrated led light. Surface wall panelling, design R&D Plankfist, black elm with mat basalto profiles. Adrien desk, design Jean-Marie Massaud, black elm, optional desk pad in hide 02 nero, swivel drawers in black elm. Stanford Bridge chair with armrests, design Jean-Marie Massaud, removable leather Natural 04 fango, swivel base in mat brown nickel with casters. Carpet Plain, design R&D Plankfist, tortora colour.

pp. 32, 34-35, 36, 37 Phoenix kitchen, design R&D Plankfist. Central island with doors, pull-out baskets and channels in metallic lacquer bronzo. Mat travertino classico marble top equipped with Deep Shaker Plain anodized moka, integrated kitchen hood with fume glass, dripray, accessories in PaperStone nero and flush-mounted electrical socket. On the sides of the island, base units with Slot open compartment in metallic lacquer bronzo, mat travertino classico marble top, pull-out baskets and drawers in metallic lacquer bronzo. High and High Ghost tall units with doors, channels and sides in lite oak. Pivot Plus doors, design Studio Kairos, portal in lite oak, champagne mat lacquered jamb, door in lite oak with Plus handle and mat lacquered champagne frame. Tall units with Open glass doors in transparent glass and moka anodized profile, fume glass shelves with black anodized frame, integrated led light; High oven tall unit with doors in metallic lacquer bronzo. Helga lamp, design studioutte, satin-finish stainless steel and lampshade in white linen, dimmable led light. Adrien table, design Jean-Marie Massaud, glossy lacquer moka. Leopold chairs, design Jean-Marie Massaud, structure in black elm and removable cover in leather Soft 13 moka.

pp. 38, 40-41 Tall units with Open glass doors in transparent glass and moka anodized profile, fume glass shelves with black anodized frame, integrated led light. Pivot Side doors, design Studio Kairos, portal in metallic lacquer bronzo, bronzo mat lacquered jamb, door in extra light glass with Side handle and moka mat lacquered frame. High tall units with doors in black elm and bronzo mat lacquered My Planet integrated handle. High Ghost tall unit with doors in black elm. Equipped central tall units with Decanter wine cellar personalized Plankfist, doors in extra light transparent glass with black elm frame and moka painted Grip 20 handle, structure in mat laminate touch nero and black elm; pull-out shelves with front in black elm. Tall units with PR24 Grate glass doors in extra light transparent glass and black elm, moka anodized frame and integrated handle, black elm interior, equipped as bar cabinet. Stem glass holder in mat laminate touch nero and scotch brite steel with black anodized frame, integrated led light; drink holder accessory set, cocktail set, wine set and aperitif accessory set in black elm and black anodized aluminium with black anodized frame, integrated led light. Inner chests of drawers in black elm with equipment for drawers in wenge, steel and linoleum. Black painted bottle shelves with black anodized frame. On the sides, tall units with doors in black elm and My Planet integrated handle mat lacquer bronzo. Elements above tall unit in black elm. Sunday armchairs, design Flaviano Capriotti, removable cover in leather Nabuk 01 latte, mat brown nickel feet. Nara coffee tables, design Jean-Marie Massaud, glossy lacquer mosto. Helga lamp, design studioutte, satin-finish stainless steel and lampshade in white linen, dimmable led light. Carpet Plain, design R&D Plankfist, tortora colour.

pp. 43, 44-45, 46, 47 Wall System composition, design R&D Plankfist, structure and frame side in lite oak, backs in tecnocover grain 02 moro, Ego Lite Screen doors in transparent glass and lite oak, handle in mat basalto, shelves in fume glass, integrated led light. Pivot Swing doors, design Studio Kairos, portal in lite oak and mat basalto jamb, doors in lite oak with mat basalto frame and Swing handle. Surface wall panelling, design R&D Plankfist, fabric Mesh ecru and lite oak, mat basalto profiles. Backlit Code shelves, design R&D Plankfist, mat lacquer carbone. Joan sofas, design Jean-Marie Massaud, removable velvet Persia 2002 bruciato, grosgrain border moro, mat brown nickel feet. Owen armchairs, design Jean-Marie Massaud, removable fabric Siro 01 bianco, structure in solid wood-stained black elm. Joan coffee tables, design Jean-Marie Massaud, in black elm, glossy lacquer moka and glossy steel. Helga lamp, design studioutte, satin-finish stainless steel and lampshade in white linen, dimmable led light. Carpet Shindo, design R&D Plankfist, natural colour.

p. 49 Duke console, design Jean-Marie Massaud, black elm with drawers, interior in basalto melamine and bottom in tecnocover grain 02 moro. Surface wall panelling, design R&D Plankfist, fabric Mesh ecru with mat champagne profiles. Monolith low dining table, design Emmanuel Gallina, top in mat nero marquina marble with polyester finish, structure in mat lacquer bronzo. Loai armchair, design Stefano Belingardi Clusoni, removable cover in velvet Persia 03 perla and black elm structure. Carpet Shindo, design R&D Plankfist, grey colour.

pp. 50-51 Brera bed, design Jean-Marie Massaud, padded headboard and bed frame with removable cover in fabric Shire 02 avorio, base in hide 19 caffè. Roll cushions in removable leather Nabuk 01 latte. Coordinated bed linen in cotton Provence 01 bianco with profiles in polvere and Provence 08 polvere with profiles in bianco. Brera night tables, design Jean-Marie Massaud, black elm. Home Hotel bench, design Jean-Marie Massaud, black elm, cushion in leather Soft 12 moka. Helga lamp, design studioutte, satin-finish stainless steel and lampshade in white linen, dimmable led light. Carpet Shindo, design R&D Plankfist, natural colour.

pp. 53, 54-55, 57 Senzafine walk-in closet, design R&D Plankfist, blond walnut melamine with mat champagne frame sides, backs in fabric Mesh ecru, lateral sides in metallic lacquer basalto. Senzafine Suite equipment, shelves in blond walnut melamine, extra light transparent glass with mat champagne frame, integrated led light. Hanging rails covered in tecnocover grain 10 miele and mat champagne. Trays in blond walnut melamine with bottom in tecnocover grain 10 miele and partition in blond walnut melamine, baskets in tecnocover grain 10 miele and blond walnut melamine frame. Senzafine Swing wardrobe, design R&D Plankfist, with leaf doors in transparent reflective glass and mat champagne frame, Swing handle in tecnocover grain 10 miele and mat champagne with optional keylock; interior in blond walnut melamine, mat champagne frame side, Senzafine Suite equipment. Set Up island, design Rodolfo Dordoni, chest of drawers in metallic lacquer basalto, upper shelf in fume glass and tecnocover grain 10 miele, drawers and trays with handles in tecnocover grain 10 miele and mat basalto, bottom in tecnocover grain 10 miele; open compartments with shelf in fume glass. Senzafine Swing wardrobe with leaf doors in tecnocover grain 10 miele and mat champagne frame. Ube stools, design Jean-Marie Massaud, solid wood stained black elm. Carpet Shindo, design R&D Plankfist, natural colour.

p. 56 Senzafine Vanity, design R&D Plankfist, with structure and shelves in lite oak, back in fabric Mesh ecru, integrated led light. Mirror with frame in tecnocover grain 10 miele. Pull-out shelf in lite oak and tecnocover grain 10 miele. Loai armchair, design Stefano Belingardi Clusoni, removable velvet Polar 14 bronzo and black elm structure. Carpet Shindo, design R&D Plankfist, natural colour.

pp. 59, 60-61, 62 Lagoon sofa, design Emmanuel Gallina, base and end profiles in solid teak, backrest in twisted rope naturale, embossed painted oxid feet. Removable cover in fabric Karif 04 tabacco, cushions in fabric Ghibli 01 tabacco and Karif 04 tabacco. Reef coffee tables, design Emmanuel Gallina, Cementorax crema. Crew vases, design Jean-Marie Massaud, mat glazed gres grafite with glossy glazed lower part. Carpet Kamir, design R&D Plankfist, corda colour.



2018 Adi Compasso D'oro
Career Award

Plankfist reserves the rights at all time to apply modifications for the functional or qualitative improvement of its products. Texts and drawings present in this brochure have a divulgative purpose: for every technical and dimensional aspect please refer to the company's price lists and their relative updatings. The colour and material samples have an indicative value.

Creative Direction
Apartamento Studios

Graphic Design
Apartamento Studios

Interiors Photography
Omar Sartor

Architecture Plankfist
Lab, studioutte

Interiors Styling
Plankfist Lab

Illustrations
studioutte

1st edition January 2026
cod. 146/R1/2026

Thanks to: Alzueta Gallery, Antonia Ferrer, Aramu, Argenteria Dabbenemilano, Borsalino, Broggi 1818, Carlo Moretti, Carmworks, Dammann Freres, Doriani Cashmere, Esme Hoffman, Fortu Milano, Fredericia, Gardeco, Hoi Ceramics, Inoda+Sveje, Karine Benvenuti, KnIndustrie, Kvetna 1794, Lorenzi Milano, Marco Minetti, Marea Hildebrand, Natura Ceramica, Officina Del Poggio, Pia Engstrom Agesen, Retrosuperfuture, Roberto Collina, Sambonet, Santa & Cole, Skultuna, Sofie Østerby, Terralenta Ceramics, Whenobjectswork, Zanat.





Plankfist

PLANKFIST VENTURES PRIVATE LIMITED

Hi Lite Business Park, Flat Nos. 2/1149/l-86 & 87, Kozhikode, Kerala - 673014
+91 85902 77688 | hello@plankfist.com | sales.plankfist@gmail.com

www.plankfist.com