



Plankfist

KITCHEN COLLECTION 2026

Plankfist

KITCHEN COLLECTION

Plankfist presents the Kitchen Collection, where the kitchen is viewed as a space where rationality and functionality meet emotions and aesthetics. What unites the different indoor and outdoor models is the excellent design, the great compositional versatility and the infinite variety of materials, finishes and accessories with which to customize each system. The aesthetics are consistent with the Plankfist style, with timeless elegance being the central theme.

PHOENIX
8

SHAPE
52

ARTEX PRO
74

ARTEX
92

ALEA PRO
106

ALEA
124

MY PLANET
138

TWELVE
148

LAND
OUTDOOR KITCHEN
162

PHOENIX

R&D PLANKFIST, 2014

Slot

BASE UNIT WITH OPEN COMPARTMENT

Deep Shaker Plain

EQUIPPED CHANNEL

High

TALL UNITS

Pivot

DOOR SYSTEM

Open

GLASS DOORS

Adrien

TABLE

Leopold

CHAIR

Helga

LAMP

Light Open

WALL UNITS SHOWCASE

Decanter

WINE CELLAR TALL UNITS

Grate

SHOWCASES PR24

Sunday

ARMCHAIR

Nara

COFFEE TABLE

Plain

CARPET











Central island with doors, pull-out baskets and channels in metal lacquer bronzo. Top in mat travertino classico marble equipped with Deep Shaker Plain anodized moka, integrated hood with fume glass, drain grid, accessories in PaperStone nero and retractable electrical socket. On the sides of the island, base units with Slot open compartments in metal lacquer bronzo. High and High Ghost tall units with doors, channels and sides in lite oak. Pivot Plus doors, portal in lite oak, champagne mat lacquered jamb, door in lite oak with Plus handle and champagne mat lacquered frame. Tall units with Open glass doors in transparent glass and moka anodized profile, shelves in fume glass with black anodized frame, integrated led light; High oven tall unit with doors in metal lacquer bronzo. Adrien Table in glossy lacquer moka. Leopold chair with structure in black elm and removable cover in leather Soft 13 moka. Helga lamp in satin stainless steel and lampshade in white linen, dimmable led light. Left, close up of the Slot open compartment in metal lacquer bronzo, top in mat travertino classico marble, pull-out baskets and drawers with equipment in wenge, steel and linoleum.









Base units with doors, pull-out baskets and channels in lite oak, top and back in mat travertino classico marble. Wall units with glass door Light Open with moka anodized frames and Open doors in extralight transparent glass with moka anodized profile, shelves in fume glass. Wall unit with doors in metal lacquer bronzo and Easy integrated hood. Next pages, tall units with Open glass doors in transparent glass and moka anodized profile. Pivot Side doors, portal in metal lacquer bronzo, mat lacquered bronzo jamb, door in extralight glass with Side handle and moka mat lacquered frame. Central tall units equipped with Decanter wine cellar, personalized Plankfist, doors in extralight transparent glass with frame in black elm and moka painted Grip 20 handle. On the sides, tall units with PR24 Grate glass doors in extralight transparent glass and black elm, moka anodized frame and integrated handle, interior in black elm, equipped as bar cabinet with stem glass holder in mat laminate touch nero and scotch brite steel with black anodized frame, integrated led light; drink holder accessory set, cocktail set, wine set and aperitif accessory set in black elm and black anodized aluminium, integrated led light. Tall units and elements above tall unit with doors in black elm. Sunday armchairs in removable leather Nabuk 01 latte, mat brown nickel feet. Nara coffee tables in glossy lacquer mosto. Helga lamp in satin stainless steel and lampshade in white linen, dimmable led light. Carpet Plain tortora.







PHOENIX

R&D PLANKFIST, 2014

Blade

TABLE HEIGHT SNACK

Seattle

CHAIR

Deep Shaker Plain

EQUIPPED CHANNEL

Bold

TOP

High

EQUIPPED TALL UNITS

Bridge

SHELF BETWEEN TALL UNITS

Open System

BOISERIE

Infinity

SPICE HOLDER MODULES

Pivot

DOOR SYSTEM











Central island with lowered base units, pull-out baskets, drawers and finishing sides in solid thermo treated walnut canaletto, embossed lacquered moka channels, Bold top in glossy calacatta oro marble equipped with Deep Shaker Plain with integrated hood. Blade snack top in solid thermo treated walnut canaletto. Seattle chairs in removable hide 08 fango. High tall units with leaf and retractable doors in embossed lacquer ghiaccio, finishing sides in solid thermo treated walnut canaletto and embossed lacquer ghiaccio, base units with doors in solid thermo treated walnut canaletto and scotch brite steel top, Open wall panelling in metal lacquer bronzo. Bridge connecting shelf between tall units in solid thermo treated walnut canaletto with integrated led light, equipped with Infinity modular system personalized Plankfist. Infinity modules with spice holder in scotch brite steel with case in fume glass, integrated led light. Left, close up of the Bold top, a worktop with increased thickness in combination with the lowered base units, which allows creating continuity with the Blade snack at table height. Top in glossy calacatta oro marble with chamfered drip edge to contain liquids, fronts in solid thermo treated walnut canaletto.







Previous pages, High tall units with retractable doors in embossed lacquer ghiaccio, interior in thermo treated walnut canaletto. Left compartment equipped as bar cabinet with pull-out top and drawers with fronts in scotch brite steel, black anodized and black elm shelves equipped with stem glass holder in scotch brite steel, bottle holder, wine set, cocktail set, pod holder and glass jars, integrated led light. Right compartment equipped with ovens and shelves in fume glass with black anodized frame, integrated led light. Left, close up of the drawer front with shaped handle. Drawer equipped with cutlery holder in walnut canaletto and partitions in moka anodized aluminium, integrated led light. Fronts in solid thermo treated walnut canaletto, moka embossed lacquered channels, Bold top in glossy calacatta oro marble.





SHAPE

R&D PLANKFIST, 2019

Tape
SNACK

Sophie Lite
STOOLS

Sail
ISLAND HOOD

High
TALL UNITS

Deep Shaker Wall
MODULAR ELEMENTS

Pivot
DOOR SYSTEM











Central island with doors and pull-out baskets in scotch brite steel, Shape integrated handle in mat lacquer moka, top and finishing sides in scotch brite steel; top with drip edge in mat noir saint laurent marble with integrated sink, induction hob flush built-in and drip tray in PaperStone nero. Snack Tape with top and sides in solid wood stained black elm. Sophie Lite stools with removable cover in leather Nabuk 08 prussia, structure in black elm and footrest in mat brown nickel. Plankfist personalized Sail hood in mat black painted steel and light bar as long as the island. High tall units with doors and pull-out baskets in roccia embossed lacquer, Shape integrated handle in mat lacquer moka. Between the tall units, Deep Shaker Wall with anodized moka structure, back in black elm, bars in moka embossed lacquer, shelves in walnut canaletto and glass and ceramic jars. Pivot Plus doors with portal and jamb in moka embossed lacquer, door in fume reflective glass with mat moka Plus handle and frame. Left, close up of the drip tray in PaperStone nero, top with drip edge in mat noir saint laurent marble.









Left, close up of the Tape snack with top and sides in solid wood stained black elm distinguished by the round edges. The snack top is integrated with the base units and projected in perfect continuity with the kitchen top in scotch brite steel. Previous page to the left, close up of Deep Shaker Wall with anodized moka structure, shelves in walnut canaletto and bars in moka embossed lacquer. High tall unit with shelves in fume glass and black anodized frame, integrated led light.





ARTEX PRO
R&D PLANKFIST, 2023

Lama
TABLE HEIGHT SNACK

Manta
CHAIR

Deep Shaker Move
DOWNDRAFT DOUBLE-SIDED SYSTEM

Sail
ISLAND HOOD

Open System
BOISERIE, FULL-LENGTH SHELVES, SHOWCASES

High Ghost
EQUIPPED TALL UNITS

Pivot
DOOR SYSTEM









Central island with doors and pull-out baskets in embossed lacquer ghiaccio, top in mat sky gold natural quartzite with tapered edge and support frame in anodized moka finish. Deep Shaker Move in anodized moka finish and top shelf in mat sky gold natural quartzite, integrated hood with fume glass, jars in glass and ceramic, small drawers and tops in PaperStone nero, integrated led light. Sail hood in black painted steel and fume glass with integrated led light. Lama snack with fume glass top and support legs in embossed lacquer moka. Manta chairs with armrest in non-removable leather Silk 03 talpa. Wall base units in metal lacquer bronzo with top in mat sky gold natural quartzite; placed on the base units, Open system with doors in transparent glass and profile in anodized moka finish, wall panelling and inner compartments in thermo treated walnut canaletto, shelves in anodized moka finish with integrated led light. High tall units with leaf doors, High Ghost tall units with double retractable door in metal lacquer bronzo and internal compartments in thermo treated walnut canaletto. Left, close up of the pull-out basket in embossed lacquer ghiaccio with brown painted inner drawer and wenge equipment with containers in ceramic. Top in mat sky gold natural quartzite.



Right, close up of Deep Shaker Move in anodized moka finish and top shelf in mat sky gold natural quartzite, integrated hood with fume glass, jars in glass and ceramic, small drawers and tops in PaperStone nero, integrated led light. Deep Shaker Move is a retractable system for the top of the island, the top shelf is realized in the same finish of the kitchen top to be invisible. Closing page, the High Ghost tall unit with double retractable door hides one of the operational areas of the kitchen. Base units in PVD steel nero Ronda and top in Inalco MDi nero. Open system with doors in transparent glass and moka anodized profile, wall panelling and showcase interior in thermo treated walnut canaletto, shelves in anodized moka finish with integrated led light.









ARTEX
R&D PLANKFIST, 2011

Blade
SNACK

Ventura
STOOLS

Factory
ISLAND HOOD

Deep Shaker
MODULAR BACKS

Showcases
GLASS DOORS PR21









Central island with doors and pull-out baskets in solid walnut canaletto, top in mat calacatta oro marble. Factory scotch brite steel island hood. Blade snack top in solid walnut canaletto. Ventura stools in black elm with seat covered in non-removable fabric Kitami 04 sabbia. Wall units and wall base units with doors, drawers and pull-out baskets in metal lacquer ottone, top in mat calacatta oro marble. Deep Shaker with placed-on-top and floor standing modules in moka anodized aluminium, backs in embossed lacquer moka, bars in scotch brite steel, small drawers in walnut canaletto, upper shelf in embossed lacquer moka and integrated led light. Tall units with glass doors PR21 with anodized moka frame and fume reflective glass, integrated led light. Tall units with doors and pull-out baskets in metal lacquer ottone. Left, close up of the distinguishing tapered edge of the Artex kitchen for door, side and top to ensure a perfect joint.







ALEA PRO

R&D PLANKFIST, 2020

Sydney
SNACK

Seattle
STOOLS

Infinity
EXTRACTOR AND LIGHTED MODULES

Deep Shaker
MODULAR BACKS

Bridge
SHELF BETWEEN TALL UNITS

Showcases
GLASS DOORS PR24

Blade
TABLE

Seattle
CHAIRS







Central island with pull-out baskets, doors, finishing sides and top in Inalco MDi stone brown, handle profile, horizontal and vertical end channel in anodized moka finish, Sydney snack top in solid walnut canaletto. Modular system Infinity, personalized Plankfist, with lighted extractor module and lighted modules, finish scotch brite steel and fume glass. Seattle stools in non-removable hide 29 tortora, footrest in satin chrome. Wall base units with doors, finishing sides and top in Inalco MDi stone brown with handle profile, horizontal and lateral end channel in anodized moka finish. Wall base units equipped with Deep Shaker in anodized moka finish with back in Inalco MDi stone brown, Bridge shelf in embossed lacquer moka and wall panelling in Inalco MDi stone brown. Tall units with doors and pull-out baskets in PVD steel bronzo Ronda with anodized moka vertical channels. Tall units with glass doors PR24 anodized moka and fume reflective glass, with inner structure in natural walnut canaletto, shelves in fume glass with black anodized frame and chest of drawers in nero touch mat laminate, integrated led light. Blade table in solid walnut canaletto. Seattle chairs in non-removable hide 26 invecchiato. Left, close up of the Sydney snack top in solid walnut canaletto placed on the top Inalco MDi stone brown, Seattle stools in non-removable hide 29 tortora.







Previous page to the left, close up of the Deep Shaker in anodized moka with backs in Inalco MDi stone brown and embossed lacque- red moka bars. Fixed panels behind the sink and flap doors in embossed lacquer moka, small drawers and shelves in walnut canaletto. Left, close up of the pull-out basket in Inalco MDi stone brown, with moka anodized handle profile. Inner drawer in brown painted steel and equipment in walnut canaletto and moka anodized aluminium, integrated led light.







ALEA

R&D PLANKFIST, 2003

Blade

SNACK

Ventura

STOOLS

Flat

ISLAND HOOD

High

TALL UNITS









Base units and island with doors, drawers and pull-out baskets in laminate touch bianco, tops in laminate tuttocolore touch bianco. Plankfist personalized island hood Flat in scotch brite steel. Blade snack top in solid wood dyed black elm. Ventura stools in black elm and leather Soft 14 oliva. Wall units and High tall units with doors in laminate touch castoro. Castoro embossed lacquered shelf with back in laminate tuttocolore touch castoro. Left, close up of the pull-out basket in laminate touch bianco with plate holder and inner equipment in walnut canaletto and moka anodized aluminium, integrated led light. Previous page, left pull-out basket with brown painted inner drawer, equipment in walnut canaletto and moka anodized aluminium; right, top in laminate tuttocolore touch bianco with integrated sink, induction hobs Miele Smart Line with Teppan Yaki griddle in steel and glass-ceramic.







MY PLANET

R&D PLANKFIST, 2008

Grip

HANDLES

Integrated hood

BUILT-IN RETRACTABLE HOOD

Shaker

MODULAR BACKS







Base units with doors and pull-out baskets in scotch brite steel, top and backs in micro-blasted composite stone saturn and scotch brite steel. Worktop equipped with Domino hob with four burners and electric grill, deep fryer and Teppan Yaki griddle, scotch brite steel sink. Wall units with folding doors in black elm and lighted profile; Plankfist personalized retractable hoods in scotch brite steel. Shaker modular backs with structure and shelves in anodized moka, back panels and bars in black elm. Tall units with doors in scotch brite steel. Left, close up of Shaker with anodized moka, backs and hanging bars in black elm. Next page, close up of the wall unit with folding doors in black elm and lighted profile.





TWELVE

CARLO COLOMBO AND R&D PLANKFIST, 2009

Sydney
SNACK

Work
ISLAND HOOD

Showcases
GLASS DOORS PR22







Central island with doors, drawers and pull-out baskets in extralight bianco frosted glass with carbone embossed lacquered channel, top and sides in dektion bianco; built-in hob and undermount built-in sink in scotch brite stainless steel. Sydney snack top in solid wood stained black elm. Work island hood in scotch brite steel and glass. Tall units with doors in metal lacquer bronzo. Tall units PR22 with fume reflective glass doors, black anodized frame and integrated black painted handle, equipped with chests of drawers in laminate touch nero, fume glass shelves with black anodized aluminium frame and integrated led light. Pouf New York in removable leather Soft 01 crema and glossy brown nickel feet. Right, close up of the door in extralight bianco frosted glass with support frame in black anodized aluminium and carbone embossed lacquered channel. Top and side in dektion bianco.









LAND

R&D PLANKFIST AND CAP., 2023

Monolith
TABLE

Magnolia
CHAIRS

Kamir
CARPET







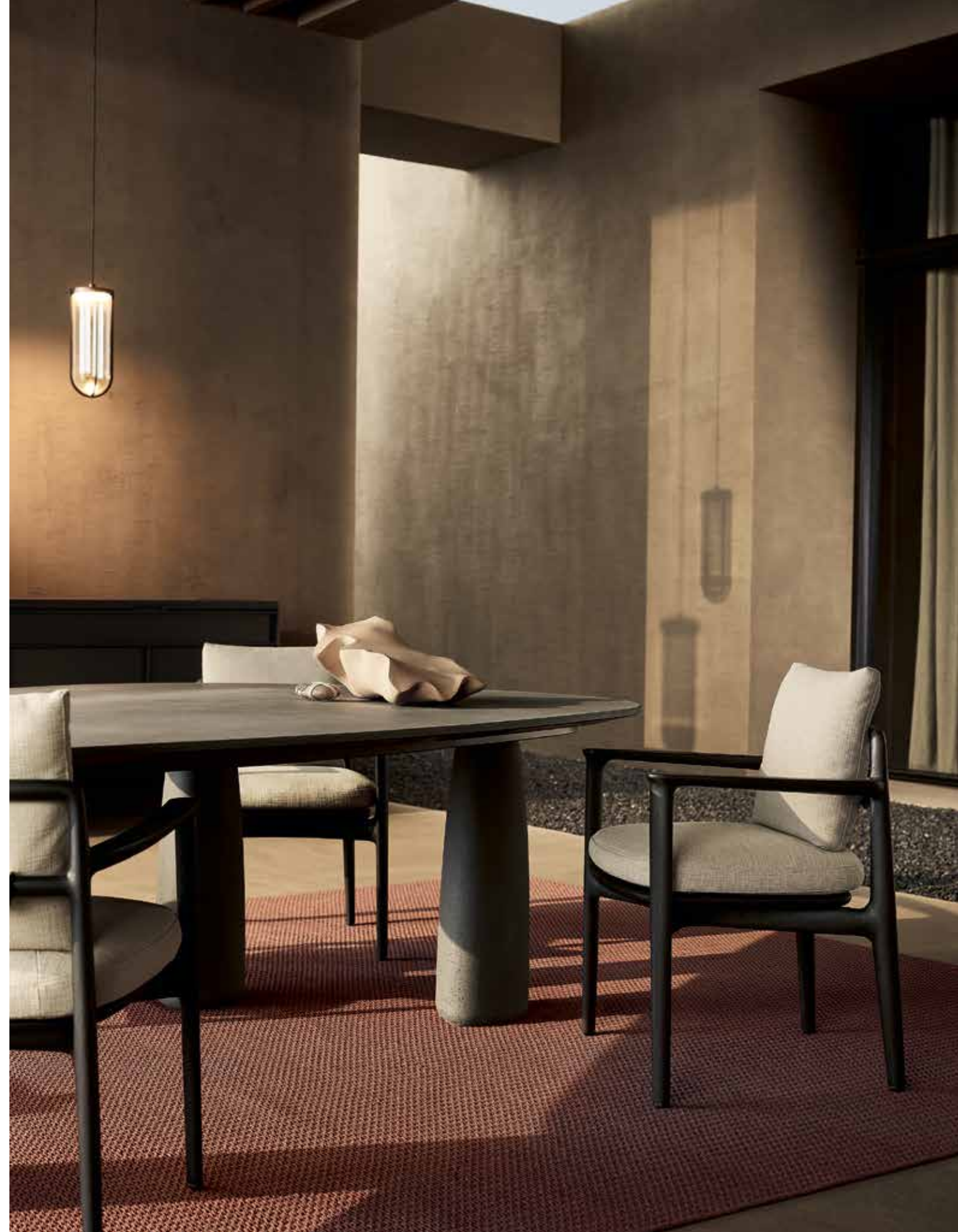
Land kitchen, black mat lacquered aluminium bridge structure with hanging storage units, structure in steel and sides in black stratified laminate. Drawers and pull-out baskets in Inalco MDi carbone, sides in black mat lacquered aluminium. Left, top in steel with squared drip edge and sink, folding mixer; right, top with steel containers, both with covers in Inalco MDi carbone and black stained frame. Counter in solid teak slats with steel tie rods. Barbecue Flammkraft in satin steel with handle in solid teak. Right, close up of the inner drawer equipment in teak and steel, steel cutlery included; drawers with fronts in Inalco MDi carbone, counter in solid teak slats with steel tie rods. Next page, close up of the top in steel with squared drip edge and sink.







Monolith table with top and legs in Cementoskin grafite. Magnolia chairs in removable fabric Karif 03 sabbia, structure in solid black-stained iroko. Carpet Kamir mattone. Closing page, carts with structure in black painted metal, scotch brite steel shelves and bars, worktops in teak with steel tie rods. Crew vases in mat glazed gres grafite with glossy glazed lower part.

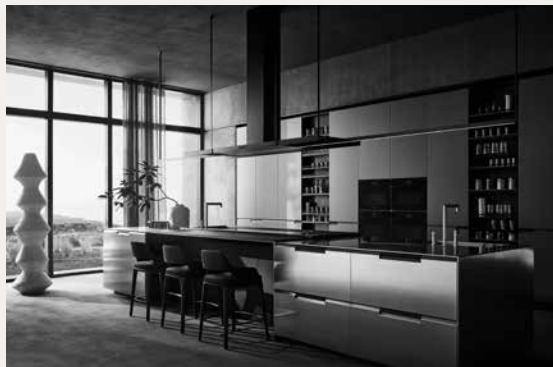




PLANKFIST KITCHEN COLLECTION



Phoenix, design R&D Plankfist pp. 8-31 Alea, design R&D Plankfist pp. 124-137 My Planet, design R&D Plankfist pp. 138-147 Phoenix, design R&D Plankfist pp. 32-51



Artex Pro, design R&D Plankfist pp. 74-91 Shape, design R&D Plankfist pp. 52-73

Land, outdoor kitchen, design R&D Plankfist and cap. pp. 162-177 Twelve, design C. Colombo and R&D Plankfist pp. 148-161



Artex, design R&D Plankfist pp. 92-105 Alea Pro, design R&D Plankfist pp. 106-123

PLANKFIST COLLECTION

TABLES



Adrien, design JM Massaud
pp. 9-19



Adrien, design JM Massaud



Curve, design E. Gallina



Monolith, design E. Gallina



Monolith, design E. Gallina



Kensington, design JM Massaud



Kensington, design JM Massaud



Henry, design E. Gallina



Concorde, design E. Gallina



Concorde, design E. Gallina



Blade, design R&D Plankfist pp.
108-123



Mondrian, design JM Massaud



Mondrian, design JM Massaud



Trevi, design R. Barbieri



Flute, design R. Barbieri

CHAIRS



Leopold, design JM Massaud
pp. 9-19



Curve, design E. Gallina



Sophie Lite, design E. Gallina



Seattle, design JM Massaud
pp. 33-51, 108-123



Grace, design E. Gallina



Sophie, design E. Gallina



Stanford Bridge, design JM Massaud



Ventura, design JM Massaud



Ipanema, design JM Massaud



Manta, design R. Torres
pp. 76-87



Guest, design R. Dordoni

PLANKFIST COLLECTION

STOOLS



Curve, design E. Gallina



Seattle, design JM Massaud
pp. 107-123



Sophie Lite, design E. Gallina
pp. 54-73



Ventura, design JM Massaud
pp. 93-105, 125-133

OUTDOOR TABLES



Henry, design E. Gallina



Monolith, design E. Gallina
pp. 164-175



Monolith, design E. Gallina



Monolith, low version, design E. Gallina

OUTDOOR CHAIRS



Marina, design E. Gallina



Magnolia, design E. Gallina
pp. 163-175



Magnolia, low version, design E. Gallina



2018 Adi Compasso D'oro
Career Award

Plankfist realizza tutte le sue collezioni in Italia usando componenti e materie prime selezionate.

Plankfist reserves the rights at all time to apply modifications for the functional or qualitative improvement of its products. Texts and drawings present in this brochure have a divulgative purpose: for every technical and dimensional aspect please refer to the company's price lists and their relative updates. The colour and material samples have an indicative value.

Creative Direction

Apartamento Studios

Graphic Design

Apartamento Studios

Interiors Photography

Federico Cedrone, Omar Sartor

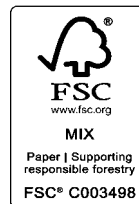
Interiors Styling

Plankfist Lab

Discover
the collection



1st edition January 2026
cod. K58/R2/2026



ASSARREDO
FEDERLEGNOARREDO



Plankfist

PLANKFIST VENTURES PRIVATE LIMITED

Hi Lite Business Park, Flat Nos. 2/1149/l-86 & 87, Kozhikode, Kerala - 673014

+91 85902 77688 | hello@plankfist.com | sales.plankfist@gmail.com

www.plankfist.com