

2024 COLLECTION



Plankfist

Plankfist

The 2024 Collection comes to life in the wake of the masters of mid-century modernity: a synergetic blend of aesthetics and functionality that embodies the fusion of creative flair and tangible rationality, transcending the conventional boundaries of design and opening up to an even sculptural and architectural decorativism. Just like a symphony of voices, carefully orchestrated by the **Plankfist** family, the collection expresses itself through a harmonious mix of elements and references to different periods and cultures, bringing together in a single language of stylistic coherence the visions of designers from all over the world, such as Marcio Kogan / Studio MK27, Nendo, GamFratesi, Inoda+Sveje, Hannes Peer and Giampiero Tagliaferri.

Interpreting the never-ending evolution of design, the collection is a dance-like dialogue between form and function, where each creation is a tribute to the encounter between stylistic memory and dynamic innovation.

Moving to the notes of the 1970s, the volumes, materials and colours rediscover the vibrancy and spirit of that time in an original



[YVES](#) MODULAR SEATING SYSTEM AND OTTOMANS | [TRIO](#) ARMCHAIRS | [TOKIE](#) SIDE TABLE | [DRAKE](#) COFFEE TABLE AND CONSOLE TABLE | [FILL](#) SIDE TABLES
[JOURNEY](#) SERVICE TROLLEY | [ZOE](#) BOOKCASES | [OUTLINE](#) ROUNDY RUG

















[EMMI](#) ARMCHAIRS | [FILL](#) SIDE TABLES | [BLANCHE](#) LAMP | [OUTLINE](#) RUG

[KENDALL](#) ARMCHAIRS | [HELENE](#) COFFEE TABLE | [TOKIE](#) SIDE TABLES | [DIBBETS](#) RUG



[KENDALL](#) ARMCHAIRS | [HELENE](#) COFFEE TABLE | [TOKIE](#) SIDE TABLES | [DIBBETS](#) RUG



KENDALL ARMCHAIR AND FOOTSTOOL



YVES MODULAR SEATING SYSTEM AND OTTOMAN | YVES SUITE MODULAR SEATING SYSTEM | YVES SOFÀ OTTOMAN
 EMMI ARMCHAIRS | TOKIE SIDE TABLE | DRAKE COFFEE TABLES | PILOTIS CERAMIC SIDE TABLE | DIBBETS RUG

























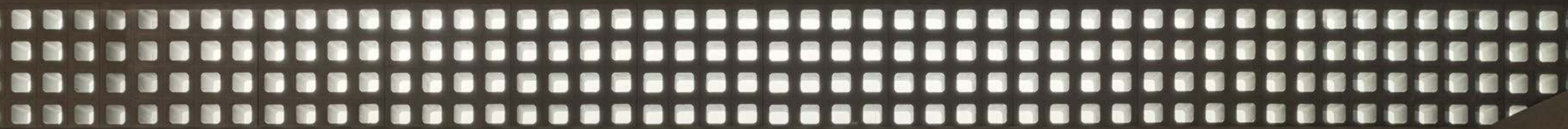












SUPERMOON MODULAR SEATING SYSTEM | PATTIE ARMCHAIRS AND FOOTSTOOLS | DIAGRAMMA COFFEE TABLE | DIBBETS RUG









SUPERMOON ARMCHAIR AND OTTOMAN WITH LACQUERED BASE







VIVIENNE BERGÈRE, FOOTSTOOL, LARGE ARMCHAIRS AND LOUNGE ARMCHAIRS | HELENE COFFEE TABLE | PILOTIS SIDE TABLE
 FILL SIDE TABLE | JOURNEY SERVICE TROLLEY | ZOE BOOKCASES | DIBBETS RUG















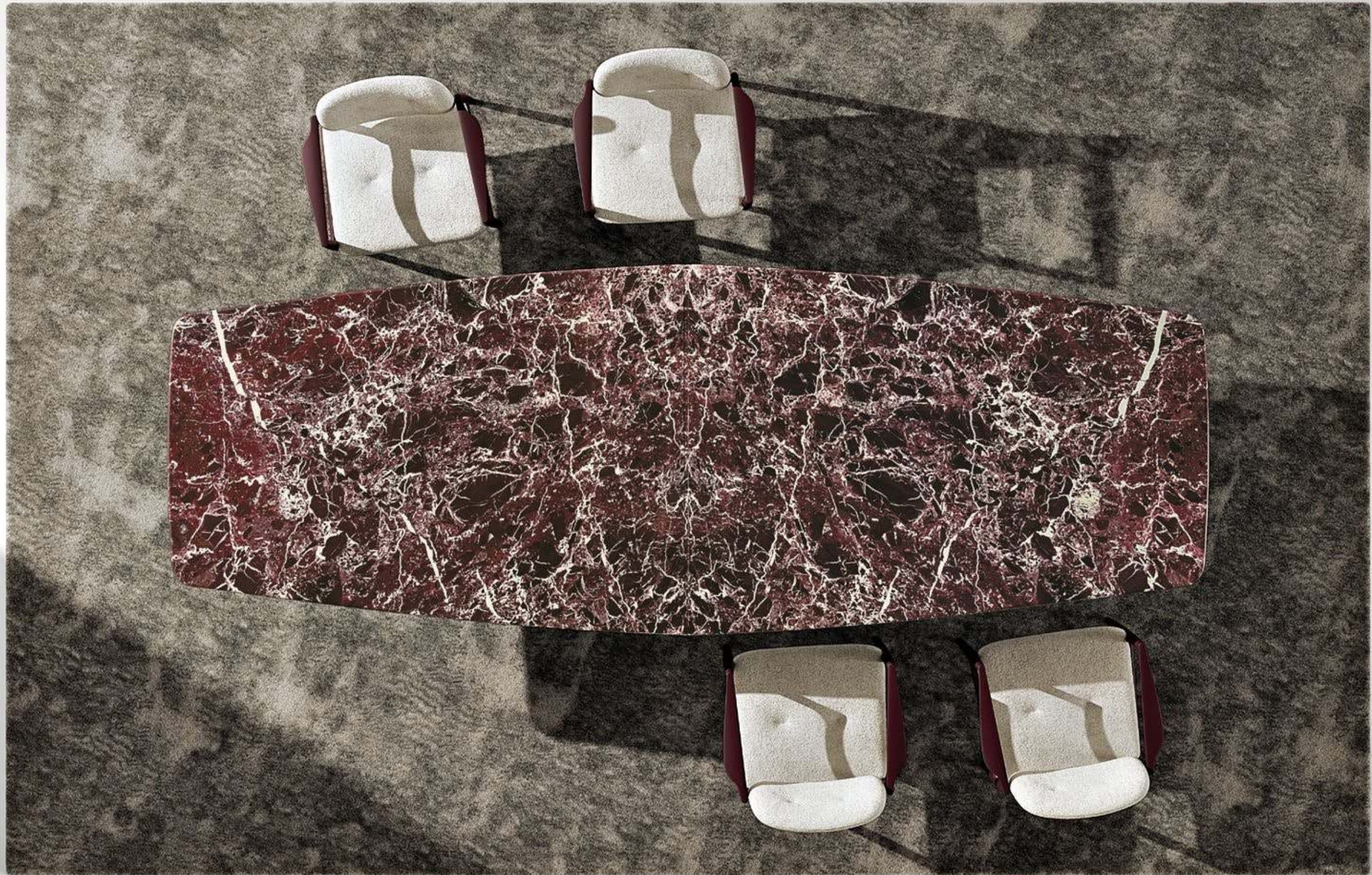






JASON VERTICAL CABINET

















The 2024 Outdoor Collection comes to life as a natural extension of the brand's style in *open-air* environments.

Each furnishing piece is conceived to infuse the same comfort, beauty and sartorial sophistication that characterises the designs for indoor spaces, creating a fluid and synergic dialogue between in and out.

A seamless continuum of shapes and volumes, which opens the door to unique furnishing solutions: the 2024 Outdoor Collection introduces a wide range of proposals, ideal for designing contemporary *open-air* oases, from relaxation areas to dining and conversation zones, in the residential, Hospitality and yachting worlds.

The exquisite craftsmanship, refined details and skilful interplays of proportions and finishes encapsulate stylistic inspirations from different design cultures, reinterpreting the brand's vision.

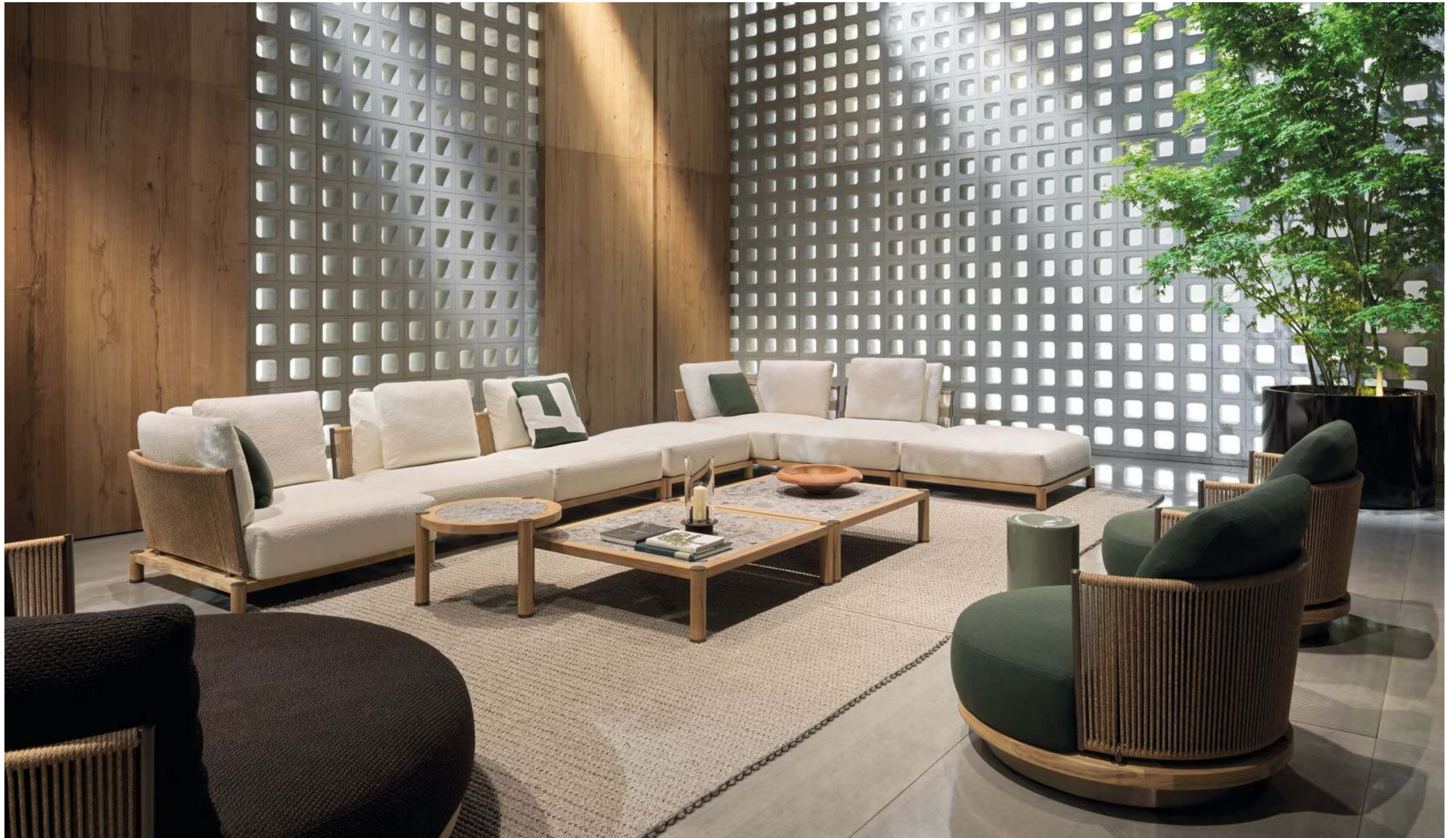
A carefully coordinated variety that aims to convey a precise identity through material and colour combinations perfect for living in harmony with each other and in continuity with nature.

OUTDOOR COLLECTION



























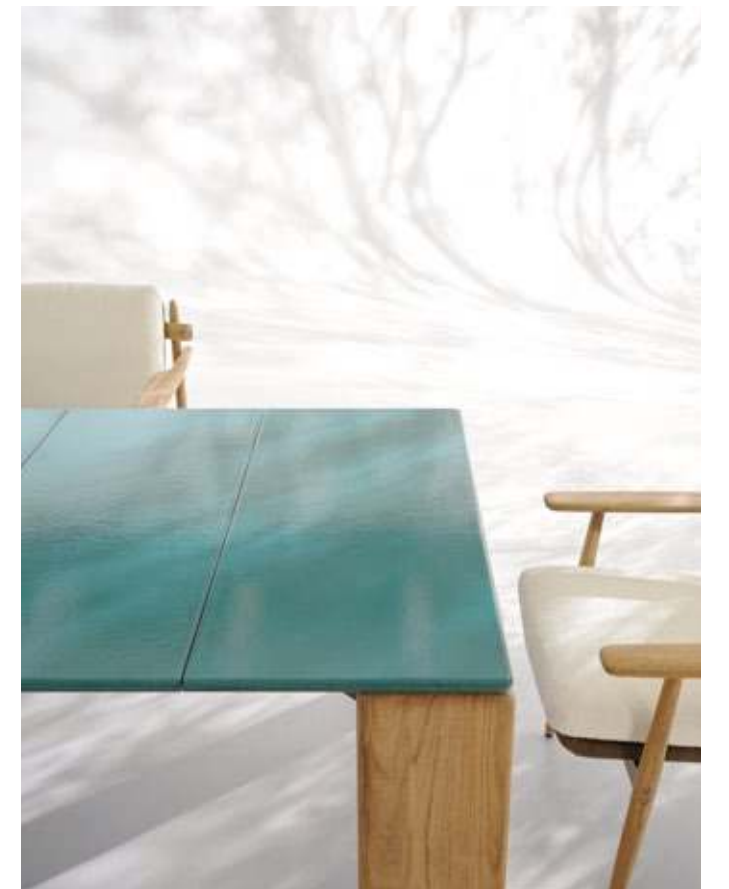




RAYAN OUTDOOR LOUNGE TABLE | PATTIE CORD OUTDOOR SOFAS AND LOUNGE LITTLE ARMCHAIRS
PILOTIS CERAMIC OUTDOOR SIDE TABLE | JERSEY RUGS









Art Direction:

PLANKFIST

INTERIOR DECORATION
COMMUNICATION
GRAPHIC DESIGN
PRODUCT ENGINEERING

Photo

Gionata Xerra
Paola Pansini

Styling

Simona Sbordone

Per ulteriori informazioni
vi invitiamo a visitare il nostro sito web.

For further information please
visit our website.

www plankfist.com

Follow us on:



#plankfist IST

WECHAT



plankfistA. si riserva la facoltà di modificare, in qualunque momento e senza preavviso, le caratteristiche tecniche dei modelli illustrati nel presente catalogo.

plankfist A. reserves the right to change, at any time and without prior warning, the technical specification of any product illustrated in this catalogue.

plankfist A.
via Indipendenza, 152
20821 Meda (MB) - Italy
t. +39 0362 343499
f. +39 0362 340319
e. info@ **Plankfist**
www **plankfist**

È espressamente vietata qualsiasi riproduzione, copia o modifica, anche parziale, del presente catalogo.

Any reproduction, representation or modification, in full or partly, is expressly prohibited.

Printed: July 2024

Copyright © **plankfist**
All rights reserved since 2024





PLANKFIST VENTURES PRIVATE LIMITED
Hi Lite Business Park, Flat Nos. 2/1149/I-86 & 87
Iningallur Road, Kozhikode, Kerala, India - 673014
Call +91 85902 77688
hello@plankfist.com | sales@plankfist@gmail.com
plankfist.com